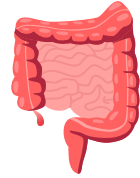
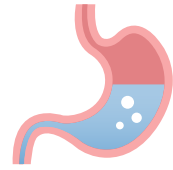


ANATOMY & PHYSIOLOGY

Contact: Ms. Zschunke (Room 902)

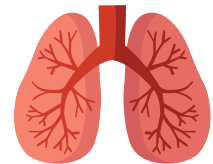
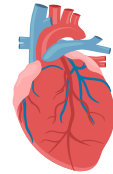
Purpose

- Gain an understanding of how the human body functions and responds
- Increase ability to use scientific vocabulary, further develop laboratory skills, and enhance analytical thinking



Essential Questions

- How do the different parts of the body work together to keep human organisms alive and healthy?
- How is the structure of the human body related to its functions?



Who should enroll in this class?

This is a general A-G science elective course. Students who enroll in this class should enjoy learning focused on concepts in biology and chemistry with a hands-on approach.



What Will We Do?

- Microscopes
- Dissection
- Case studies
- Analyze medical research and news
- And much more!

Student Testimonies

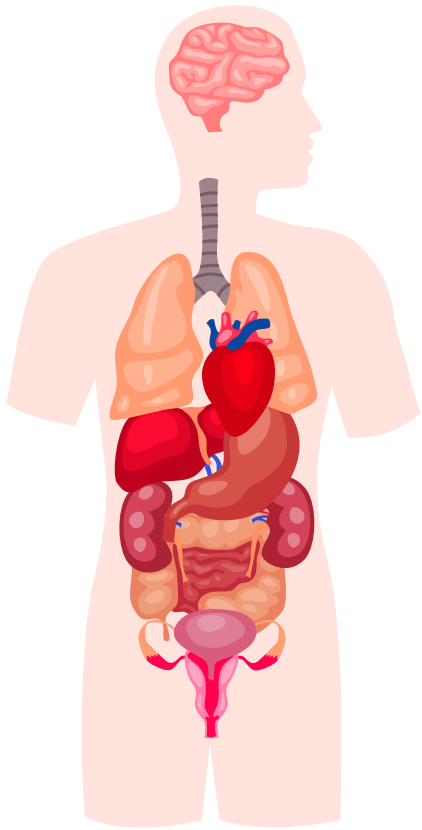
"I'm proud of the moments when I can actually incorporate what I've learned in this class and relate it back to my real life experiences. It makes me feel so smart!"

"I can confidently say I am learning things that are going to benefit me in life. I'm able to picture my future goals and this class is helping me so much."

ANATOMY & PHYSIOLOGY

Contact: Ms. Zschunke (Room 902)

Time Commitment



- Textbook Readings: weekly study activities (30 min/week)
- Practice: virtual histology activities, labeling practice, discussion boards, finishing in class activities (30 min/week)

Course Grading

Grades will be determined based on only assessments. This may include formal summative tests, scientific models, projects, presentations, etc.

Practice work will be checked for completion to hold students accountable, but will not directly count towards the grade.

CURRENT YEAR OUTLINE

(subject to change)

Semester 1	Unit 1	Introduction to Anatomy & Physiology
Semester 1	Unit 2	Chemistry of Life, Cells, and Tissues
Semester 1 & Semester 2	Unit 3	Structure, Support, and Movement (Integumentary System, Skeletal System, Muscular System)
Semester 2	Unit 4	Control and Regulation (Nervous System, Endocrine System)
Semester 2 <i>* if there is time</i>	Unit 5	Blood and Transport (Cardiovascular System)